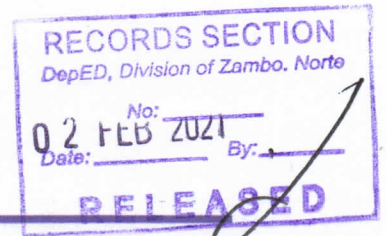




Republic of the Philippines
Department of Education
Region IX, Zamboanga Peninsula
SCHOOLS DIVISION OF ZAMBOANGA DEL NORTE



Division Advisory No. 8 s. 2021

February 1, 2021

In compliance with DepED Order No. 8 s. 2013
This advisory is issued not for endorsement per DO 28, s. 2001
But only for the information of DepED officials,
Personnel/staff, as well as the concerned public.
(depedzn.net)

1st WE-STIR e-Caravan on Career Guidance

This has reference to the letter from Ainee R. Fuentes RGC, Coordinator, e-Caravan WE-STIR: Miracle Workers, Career & Counseling Center, La Salle University, dated February 1, 2021, inviting our Grade 10 and 12 learners, school guidance counselors, designates and teacher advisers to participate on e-caravan on career guidance with the theme Miracle Workers that will be held on **February 15-19, 2021** via online provided after registration.

Activity details are provided in the enclosed invitation letter. Participants are required to register through this link: <https://bit.ly/BEdWESTIRMiracleWorkers>.

Wide dissemination of this advisory is desired.


MA. LIZA R. TABILON EdD, CESO V
Schools Division Superintendent

SGODYFS-jlp/e-Caravan on Career Guidance /ADV002-2021/02012021

N-avigating
O-pportunities to
R-eengineer for
T-ransformation &
E-mpowerment



Capitol Drive, Estaka, Dipolog City, 7100
Tel No.: (065) 212-5843
e-mail address: zn.division@deped.gov.ph



"Be and Do Much Better Each Day
with a
Sense of Urgency"



CAREER & COUNSELING CENTER



February 1, 2021

Ma. Liza A. Tabilon

*Schools Division Superintendent
Zamboanga del Norte*

Dear Ms. Tabilon,

Lasallian Greetings of Peace!

In line with The Career and Counseling Center's CALMa (Career and Lasallian-life Management activities) program and in celebration of the 14th Lasallian Family Days, La Salle University - Lasallian Mission Services is proud to invite your school(s) to participate in the 1st WE-STIR e-Caravan on Career Guidance with the theme, MIRACLE WORKERS on February 15-19, 2021.

The Career Guidance e-Caravan aims to bring participants to a dialogue on *how to get started on assessing learners' interests, abilities, and values for an ideal academic program, strategies in evaluating fit for a particular career path, learn what skills and experiences that learners' future employers will expect them to have as well as the opportunities available to gain those skills and experiences while building a professional network they will need in the world of work.*

Our renowned speaker, **Dr. Sheila Marie G. Hocson, RPsy, RGC, Rpm, CSCOP & CSAP** is known for her long-standing achievements: PRC CPD council, guidance director, accreditor, human resource practitioner, consultant, author, curriculum developer, educator, trainer, researcher, radio host, and staunch advocate for anti-bullying, career development, mental health, family, marriage, life, and child protection. Dr. Hocson is the former President of the Philippine Guidance and Counseling Association (PGCA) and former branch leader for the American Counseling Association.

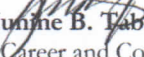
This is estimated to last for 40 minutes to an hour, which includes an open forum/question and answer portion. The e-Caravan is open to participants: grade 10 and 12 students, guidance counselors, designates and educators from the basic education. The registration fee is FREE inclusive of e-certificates and exciting surprises. To register, please click on this link <http://bit.ly/BEdWESTIRMiracleWorkers> on or before February 8, 2021. For other concerns, please get in touch with the undersigned. Mobile number: 0909-9190-789, Email address: cccbed@lsu.edu.ph. See you in February!

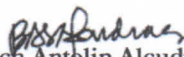
Respectfully,


Ainee R. Fuentes, RGC

Coordinator, [e-Caravan] WE-STIR: Miracle Workers

Noted:


Kateri Junnie B. Tabernero, RGC
Director, Career and Counseling Center


Br. Butch Antolin Alcudia III FSC
Vice President, Lasallian Mission

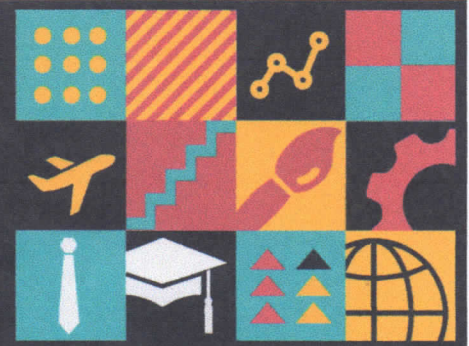
CCC-BASIC EDUCATION
cccbed@lsu.edu.ph
[facebook.com/lsucccbed](https://www.facebook.com/lsucccbed)
0909-9190-789

CCC-UNDERGRADUATE
cccun@lsu.edu.ph
[facebook.com/lsucccundergrad](https://www.facebook.com/lsucccundergrad)
0951-6524-402/521-0342 (088)

CCC-UNDERGRADUATE
cccgs@lsu.edu.ph
[facebook.com/lsucccgs](https://www.facebook.com/lsucccgs)
0995-3702-320



CAREER & COUNSELING CENTER



Speaker's Biographical Note

Dr. Sheila Marie G. Hocson

Dr. Sheila Marie G. Hocson, was the former President of Philippine Guidance and Counseling Association (PGCA) which is the premier and PRC accredited and integrated professional organization for counselors in the country. She was also the former branch leader for the American Counseling Association. Moreover, she is a PRC CPD Council, guidance director, accreditor, human resource practitioner, consultant, author, curriculum developer, educator, trainer, researcher, radio host, and staunch advocate for anti-bullying, career development, mental health, family, marriage, life, and child protection.

Currently, she's the Guidance Director of FEU Manila and Makati branches that oversees the management of the different programs and services of the FEU-Guidance & Counseling Office.

As a consultant and educator, she's currently the consultant of Childfam Possibilities Psychological Solutions, REX Publication, Project Inclusion, and Unilab Foundation. She also authored the My Career Journey Book Series for students and teachers at the Rex Publication, No to Bullying Handbook under PediaPharma Foundation, Remote Play Psychosocial Support, Playbook and Resilience Toolkit for DepEd and Unilab Foundation. Moreover, she's a research peer reviewer for Elsevier and Routledge. She is also a radio host at the ABS CBN DZMM Teleradyo show "Juander Teacher" every Saturday at 4:00-5:00 PM.

Dr. Hocson, earned a certificate course on Globalization of School Psychology at the University of Nebraska Kearney, USA, a certificate course on clinical and counseling supervision by the Australian Counseling Association and Optimise Potential Australia, Cognitive Behavior Therapy Course at the Beck's Institute, Philadelphia, USA. She also earned all her degrees (Ph.D. in Guidance and Counseling, M.A. in Clinical Psychology, B.S. Psychology- Magna Cum Laude and Cum Laude) in UST. She earned her 12 units of Special Education at St. Joseph's Graduate School.

She's also a registered guidance counselor, registered teacher, registered psychologist, registered psychometrician, certified counseling psychologist, certified assessment psychologist, and certified clinical and counseling supervisor by the Australian Counseling Association.

Some of her achievements are making PGCA win the American Counseling Association Branch Best Innovative Practice Award last April 2018, being the most outstanding Alumni Awardee for UST Professional Achievement in Guidance and Counseling last Feb 2018, most outstanding UST graduate school alumni for Psychology and Guidance Counseling practice, most outstanding faculty club member of UST Guidance and Counseling Department on SY 2008-2009 during the Tanglaw Awards, and having FEU-G&C won the PGCA's best guidance program and services in the country last May 2011. Likewise, she is also a recipient of various grants and scholarships.

She is also the founder of the Peer Organization of the Phils. co-founder of the Bayanihan for Wellbeing, part of the leadership team program head for the DOH NCMH wellness program and mental health advocacy for the youth in the country, former Auditor of UST Graduate School Alumni and student leader.

CCC-BASIC EDUCATION
cccbed@lsu.edu.ph
[facebook.com/lsuccbed](https://www.facebook.com/lsuccbed)
0909-9190-789

CCC-UNDERGRADUATE
cccun@lsu.edu.ph
[facebook.com/lsuccundergrad](https://www.facebook.com/lsuccundergrad)
0951-6524-402/521-0342 (088)

CCC-UNDERGRADUATE
cccgs@lsu.edu.ph
[facebook.com/lsuccsgs](https://www.facebook.com/lsuccsgs)
0995-3702-320